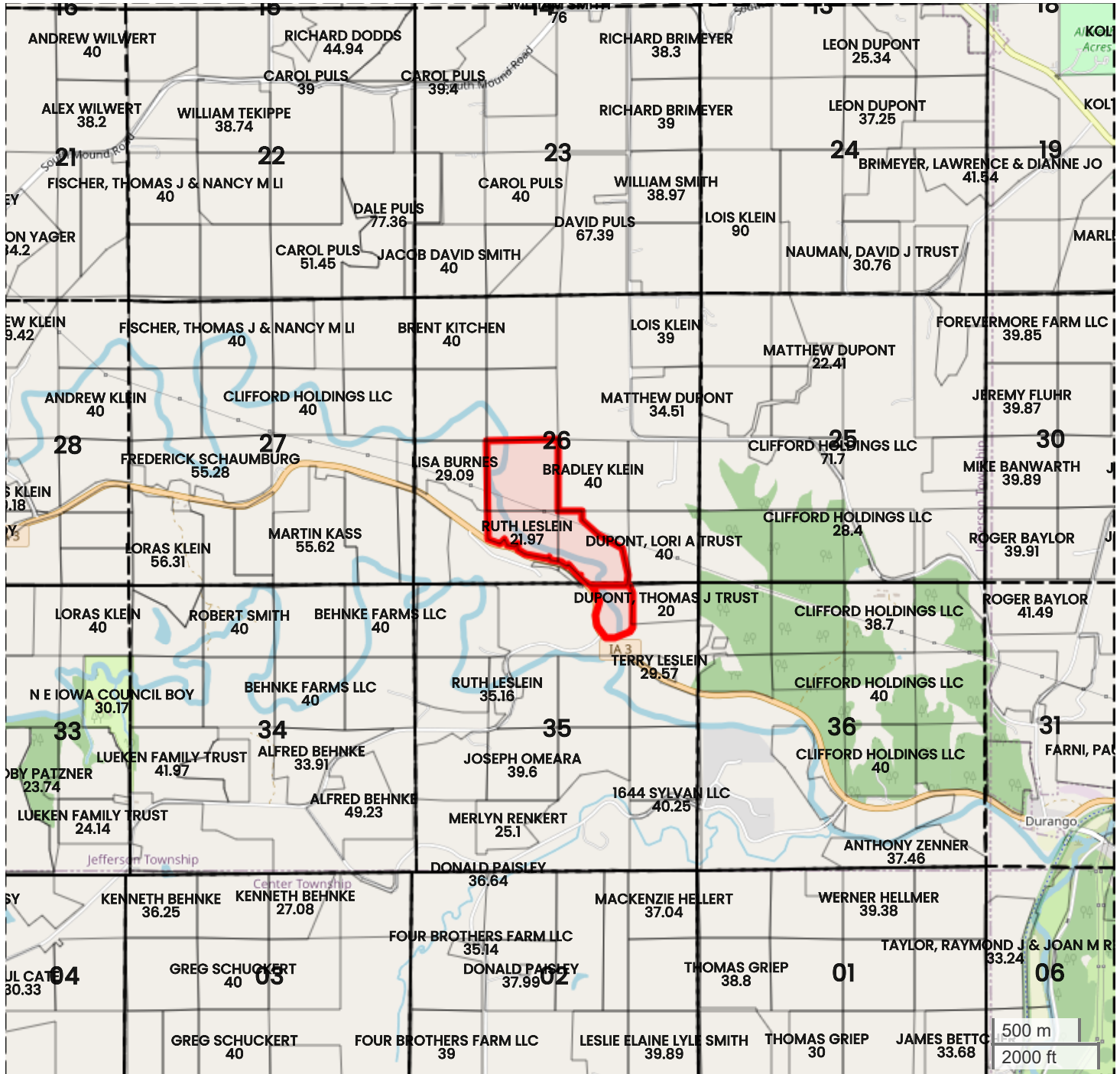




DUBUQUE COUNTY 101 ACRES M/L  
**PLAT MAP**



Center: 42.574562, -90.809398

**26-90N-1E**

**Jefferson Township  
 Dubuque County, IA**



FarmWorth, LLC makes no warranties, express or implied, regarding the accuracy of any information provided through FarmWorth.com. User is solely responsible for independently verifying all information prior to use and waives any claims against FarmWorth, LLC arising from inaccuracies in such information.